

## Special Educational Needs and Disabilities (SEND) Information Report

CHILHAM, ST. MARY'S CE PRIMARY SCHOOL



**Inclusion Team**

**SEND Governor:**  
Sarah Osborne

**SENDCO:**  
Vanessa Robinson  
Contact No. 01227 730442

[senco@chilham.kent.sch.uk](mailto:senco@chilham.kent.sch.uk)

<b>Approved by:</b>	Ratified by FGB	<b>Date:</b> October 2025
<b>Last reviewed on:</b>	September 2025	
<b>Next review due by:</b>	September 2026	

# Kent SEND Information Report

## Contents

1. What types of SEND does the school provide for? .....	4
2. Which staff will support my child?.....	5
3. What should I do if I think my child has SEND? .....	7
4. What happens if the school identifies a need? .....	8
5. How will the school measure my child's progress? .....	9
6. How will I be involved in decisions made about my child's education?.....	10
7. How will my child be involved in decisions made about their education? .....	11
8. How will the school adapt its teaching for my child? .....	132
9. How will the school evaluate whether the support in place is helping my child? .....	143
10. How will the school ensure my child has appropriate resources? .....	143
11. How will the school make sure my child is included in activities alongside pupils who don't have SEND?.....	154
12. How does the school make sure the admissions process is fair for pupils with SEN or a disability? .....	165
13. How does the school support pupils with disabilities? .....	165
14. How will the school support my child's mental health and emotional and social development? .....	166
15. What support is in place for looked-after and previously looked-after children with SEN? .....	176
16. What support will be available for my child as they transition between classes or settings or in preparing for adulthood?.....	17
17. What support is available for me and my family? (Local Offer) .....	188
18. What should I do if I have a complaint about my child's SEND support? .....	19
19. Supporting Documents.....	19
20. Glossary.....	20

---

# Kent SEND Information Report

Dear parents and carers,

The aim of this Information Report is to explain how we implement our SEND policy. In other words, we want to show you how SEND support works in our school.

As educational professionals, we are all working towards the ultimate goal of growing independent young people as they prepare for adulthood. All provision and support we provide is working towards achieving the Kent Children and Young People (CYP) Outcomes Framework:



If you want to know more about our arrangements for SEND, read our SEND policy alongside this Information Report.

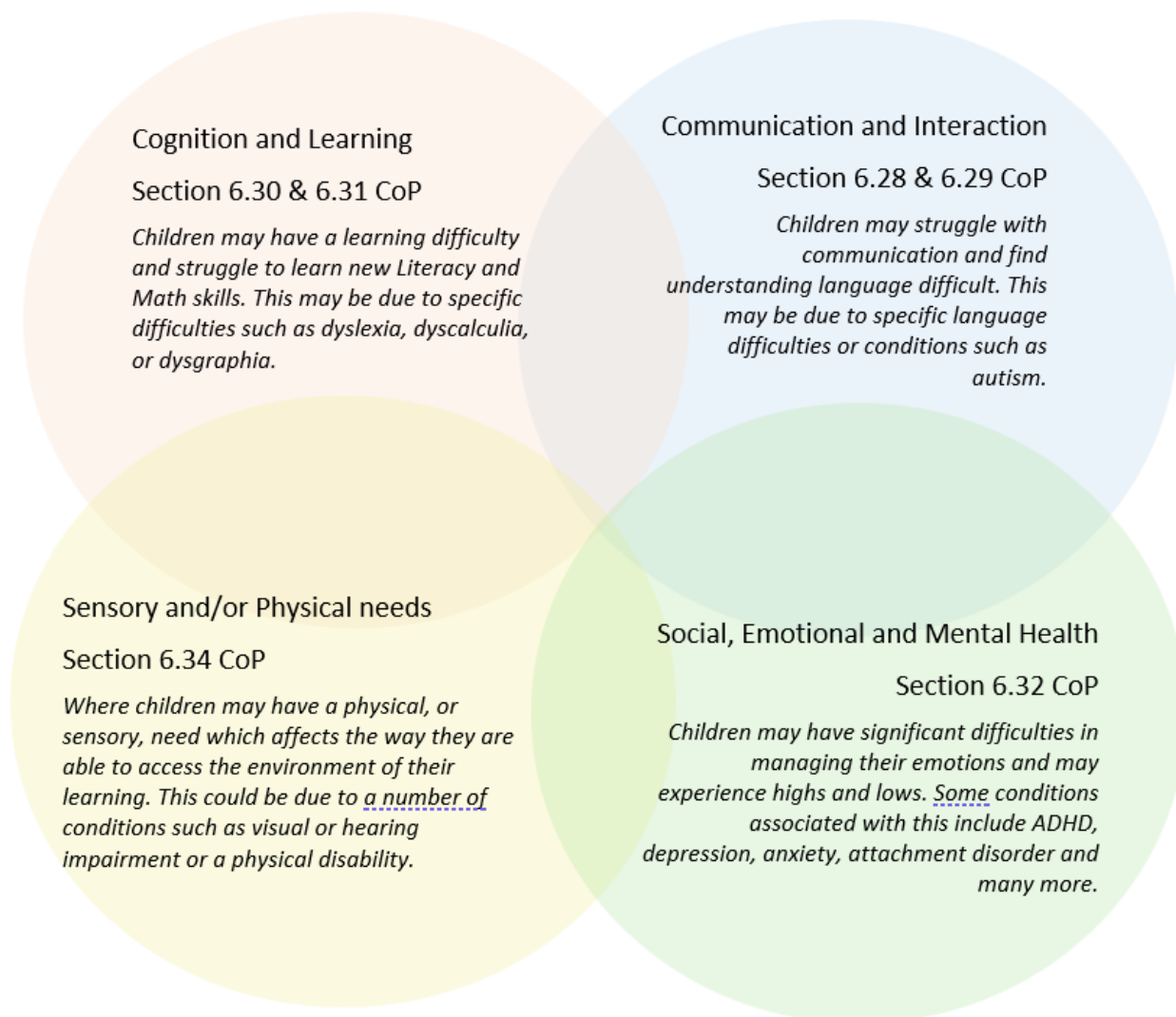
You can find our SEND policy on our website [School Policies](#)

**Note:** If there are any terms that we have used in this information report that you're unsure of, you can look them up in the Glossary at the end of the report.

# Kent SEND Information Report

## 1. What types of SEND does the school provide for?

Our school provides for pupils with the following needs (as outlined in the SEND Code of Practice 2015):



Often you will find that children's needs overlap and are rarely confined to one area of need, which is why it is important to gain a wholistic overview of your child.

More information about the Areas of Need can be found in the Special educational needs and disability code of practice: 0 to 25 years. [\(Link: code of practice\)](#)

# Kent SEND Information Report

## 2. Which staff will support my child, and what are their key responsibilities?



At Chilham, St. Mary's Primary School, all staff are considered responsible for supporting the needs of pupils with SEND. Our staff are committed to regular, high-quality training to ensure that they have the knowledge and skills to better meet a wide range of pupil needs.

Below outlines key staff who will be supporting your child. *Please note that this list is not exhaustive.*



*Miss. Becky Dolan (Head Teacher)*



*Mrs. Vanessa Robinson (SENDCO)*

### **Our Special Educational Needs Co-ordinator, or SENCO**

The named SENCO is **Vanessa Robinson**

# Kent SEND Information Report

Mrs. Robinson has had 10 years' experience in this role having worked in village and larger mainstream schools across Kent. Mrs. Robinson is also one of the DSLs in school and has an additional role of Pastoral Support Lead to both parents and children. Mrs. Robinson is a qualified teacher (B.Ed. Hons), and has taught for many years in both KS1 and KS 2. Mrs. Robinson completed the National Award in Special Educational Needs Co-ordination (NASENCO) in May 2015.

## Class/subject teachers

All of our teachers receive in-house SEN training, and are supported by the SENCO to meet the needs of pupils who have SEN.

AET Framework Training (Autism Education Trust)

SLCN – The Balance System

Mainstream Core Standards Training

De-escalation Training

Precision Teaching

Emotional Coaching

## Teaching assistants (TAs)

We have a team of 6 TAs, including one higher-level teaching assistants (HLTAs) who also has a teaching status and is trained to deliver SEN provision.

Many of our teaching assistants are trained to deliver interventions such as speech and language, phonics catch-up, sensory circuits LEGO Intervention, 5 Point Scale, Zones of Regulation and Clever Fingers.

In the last academic year, all staff, including TAs have been trained in Making Sense of Autism, delivered by AET (The Autism Education Trust).

## External agencies

Sometimes we need extra help to offer our pupils the support that they need. Whenever necessary we will work with external support services to meet the needs of our pupils with SEND and to support their families. These may include:

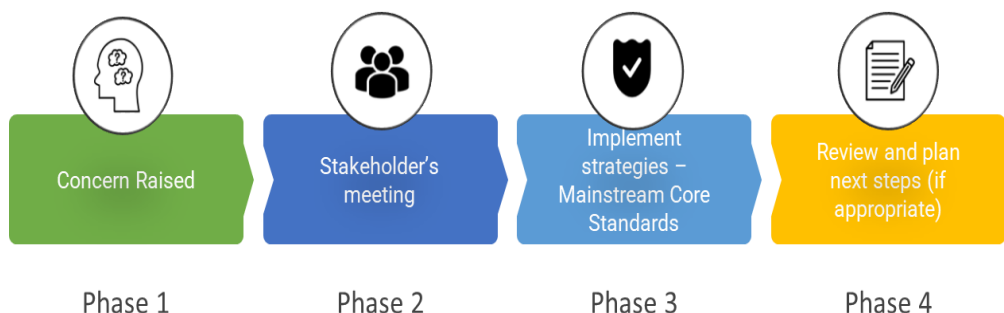
- Child and Adolescent Mental Health Services (CAMHS)
- NELFT Practitioners
- Emotional Well-being Practitioners

# Kent SEND Information Report

- Educational Welfare Officers
- Occupational Therapists
- School Liaison Officer
- School Nursing
- SEND Inclusion Advisory Team
- Specialist Teaching and Learning Service (STLS)
- Speech and Language Therapist
- Play Therapist
- GP/Paediatrician including specialist teams.
- Educational psychologists
- Safeguarding services
- Voluntary sector organisation

# Kent SEND Information Report

## 3. What should I do if I think my child has SEND?

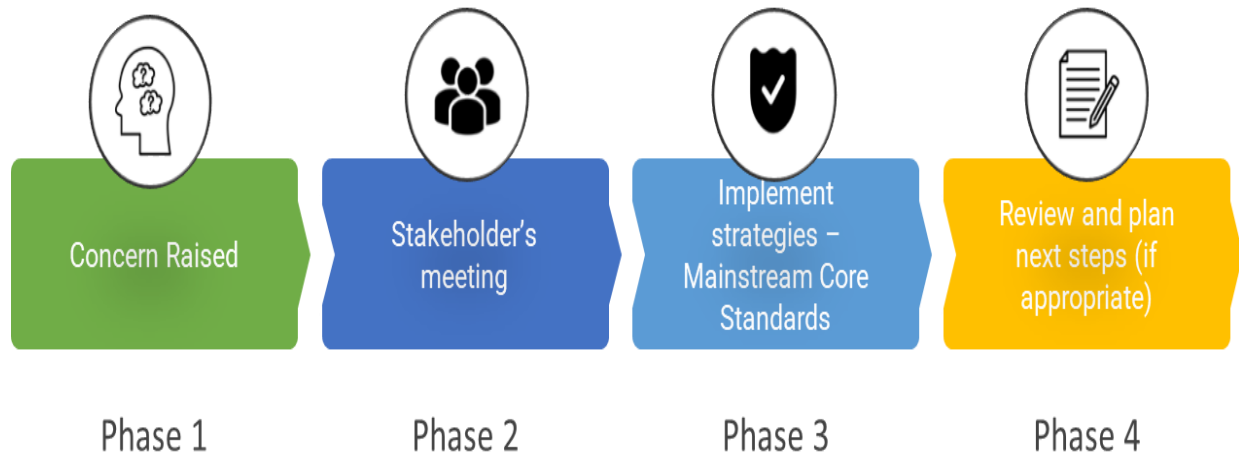


<p><b>Phase 1</b></p>	<p>If you think your child might have SEND, raise your concern with the school so that the SENCO is aware.</p> <p>Raise your concern with your child's Class Teacher or email: <a href="mailto:senco@chilham.kent.sch.uk">senco@chilham.kent.sch.uk</a></p>
<p><b>Phase 2</b></p>	<p>We will meet with you to discuss your concerns and try to get a better understanding of what your child's strengths and difficulties are. Together we will decide what outcomes to seek for your child and agree on next steps. We will make a note of what's been discussed and add this to your child's record.</p>
<p><b>Phase 3</b></p>	<p>We will implement the agreed strategies and monitor these over an agreed period of time. These are likely to be universal strategies set out in the mainstream core standards. A copy of this can be found here: <a href="#">Mainstream Core Standards</a>.</p> <p>This will initiate the 'Graduated Approach' where support will be continually reviewed. See next page for more details.</p>
<p><b>Phase 4</b></p>	<p>If we decide that your child needs SEND support, we will formally notify you and your child will be added to the school's SEND register. They will receive additional support and this will be reviewed using the assess, plan, do, review model.</p>

# Kent SEND Information Report

## 4. What happens if the school identifies a need?

The same process is followed if a concern is raised by the school.



All our class teachers are responsible for the monitoring of all pupils who have been identified as having SEND. They also review those who are not making the expected level of progress in their schoolwork or socially. This might include reading, writing, handwriting, number concerns, social communication, emotional regulation, processing and other academic concerns.

If the teacher notices that a pupil is having difficulties, they try to find out if the pupil has any gaps in their learning. If they can find a gap, the school will provide appropriate support. Pupils who don't have SEND usually make progress quickly once the gap in their learning has been filled.

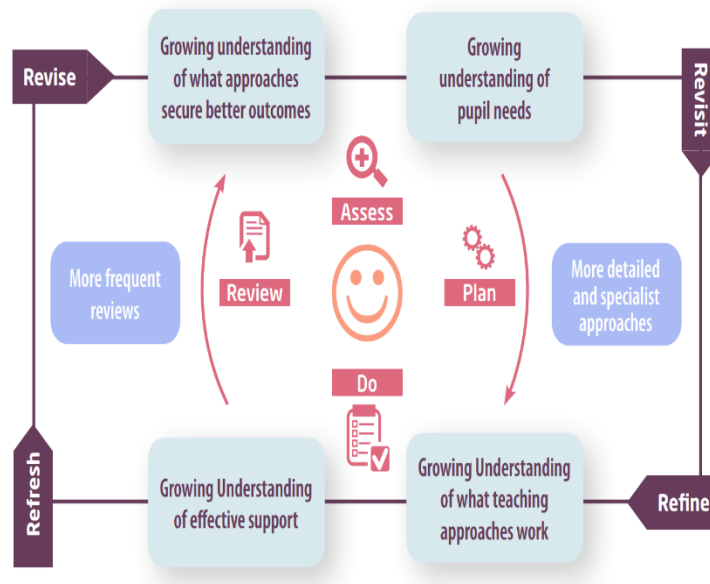
If the pupil is still finding it difficult to make the expected progress, the teacher will talk to the SENCO, and will contact you to discuss the possibility that your child has SEND, and the school will follow the graduated approach (see previous page).

# Kent SEND Information Report

## 5. How will the school measure my child's progress?

We will follow the 'graduated approach' to meeting your child's SEND needs.

The graduated approach is a 4-part cycle of **assess, plan, do, review**.



<b>Assess</b>	If your child is not making the expected level of progress, we will make an assessment to find out what strengths and difficulties your child has. We will ask for you and your child's input, as well as getting help from external professionals where necessary.
<b>Plan</b>	In discussion with you and your child, we will decide what outcomes we are hoping to achieve. We will make a plan of the support we will offer your child to help them meet those outcomes. We will make a record of this and share it with you and all relevant school staff.
<b>Do</b>	We will put our plan into practice. The class teacher, with the support of the SENCO, will be responsible for working with your child on a daily basis, and making sure the support we put in place is having the impact we intended.
<b>Review</b>	We will assess how well the support we put in place helped the pupil to meet the outcomes we set. We will use our improved understanding of your child's needs to improve the support we offer; this may mean the Plan, Assess, Do, Review cycle continues.

# Kent SEND Information Report

## 6. How will I be involved in decisions made about my child's education?

We will provide termly reports on all children's progress through our parent consultation evenings and a formal written report at the end of the academic year.

In addition, those children on our SEN-S register receive a termly (3 times a year) reviewed Personal learning Plan (PLP). Those children with an Education Health Care Plan (EHCP) will also have an PLP and parents and children are invited to attend an Annual Review Meeting to discuss progress and to update target outcomes. This will be with a member of staff who knows your child well – usually their Class Teacher. The aim of this will be to:

- Set clear outcomes for your child's progress
- Review progress towards those outcomes
- Discuss the support we will put in place to help your child make that progress
- Identify what we will do, what we will ask you to do, and what we will ask your child to do

The SENCO may also attend these meetings to provide extra support.

We know that you're the expert when it comes to your child's needs and aspirations. So, we want to make sure you have a full understanding of how we're trying to meet your child's needs, so that you can provide insight into what you think would work best for your child.

We also want to hear from you as much as possible so that we can build a better picture of how the SEND support we are providing is impacting your child outside of school.

If your child's needs or aspirations change at any time, please let us know right away so we can keep our provision as relevant as possible.

If you have concerns that arise between these meetings, please contact your child's Class Teacher or the SENDCO. This can be done via the School Office: [schooloffice@chilham.kent.sch.uk](mailto:schooloffice@chilham.kent.sch.uk)

# Kent SEND Information Report

## 7. How will my child be involved in decisions made about their education?

The level of involvement will depend on your child's age and individual needs. We recognise that no two pupils are the same, so we will decide on a case-by-case basis, with your input.

We may seek your child's views by asking them to:

- Attend meetings to discuss their progress and outcomes
- Prepare a presentation, written statement, video, drawing, etc.
- Discuss their views with a member of staff who can act as a representative during the meeting
- Complete a survey



# Kent SEND Information Report





## 8. How will the school adapt its teaching for my child?

Your child's teacher is responsible and accountable for the progress and development of all the pupils in their class.

High-quality teaching is our first step in responding to your child's needs. We will make sure that your child has access to a broad and balanced curriculum in every year they are at our school.

We will adapt our approaches to how we teach to suit the way the pupil works best. There is no 'one size fits all' approach to adapting the curriculum, we work on a case-by case basis to make sure the adaptations we make are meaningful to your child and are guided by the Mainstream Core Standards in the first instance.

These adaptations may include:

-  > Adapting our approaches, for example, giving longer processing times, pre-teaching of key vocabulary, reading instructions aloud, etc.
-  > Adapting our resources and staffing
  - > Using recommended aids, such as laptops, coloured overlays, visual timetables, larger font, etc.
-  > Teaching assistants or support staff will support pupils appropriately depending on their presentation of need
-  > Scaffolding lesson materials

### We may also provide the following interventions:

- Paired Reading
- Speech and Language Link (Infant & Junior)
- Nurture Group
- Forest School
- LEGO Intervention
- Language For Thinking
- Zones of Regulation
- All About Me
- Anxiety/Anger Gremlin
- ELSA
- Sensory Circuits
- Clever Fingers

These interventions are part of our contribution to Kent County Council's local offer.

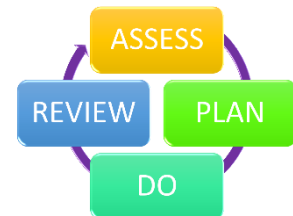
\*Interventions may be dependent on funding.

# Kent SEND Information Report

## 9. How will the school evaluate whether the support in place is helping my child?

We will evaluate the effectiveness of provision for your child by:

- Reviewing their progress towards their goals each term
- Reviewing the impact of interventions after 12 weeks
- Using pupil questionnaires
- Monitoring by the SENDCO
- Using Provision Plans to measure progress
- Holding an Annual Review (if they have an Education, Health and Care plan)



## 10. How will the school ensure my child has appropriate resources?

It may be that your child's needs mean we need to provide additional resources such as:

- Additional resources to support their learning
- Adaptations to in class support
- Further training for our staff
- External specialist expertise

Where appropriate, we will consult with external agencies to get recommendations on what will best help your child access their learning and use our best endeavours to ensure these are supplied.

# Kent SEND Information Report

## 11. How will the school make sure my child is included in activities alongside pupils who don't have SEND?



The expectation is that all schools providing an inclusive provision for all pupils. It may be necessary for some pupils to receive interventions in addition to a broad and balanced curriculum. At Chilham, St. Mary's Primary School, we pride ourselves on being a truly inclusive setting.

All of our extra-curricular activities and school visits are available to all our pupils, including our before and after-school clubs.

All pupils are encouraged to go on our school trips, including our year six residential trip. There may be occasions where we ask parents to support their child on a school trip as part of the Risk Assessment.

All pupils are encouraged to take part in sports day, school plays, special workshops, assemblies etc.

No pupil is ever excluded from taking part in these activities because of their SEN or disability and we will make whatever reasonable adjustments are needed to make sure that they can be included safely. At Chilham, St. Mary's some of our activities are off-site. On some occasions we may invite parents to support their children.

# Kent SEND Information Report

## 12. How does the school make sure the admissions process is fair for pupils with SEN or a disability?



Parents of children with SEND are welcomed to tour our school ahead of admissions meetings. These tours can sometimes be repeated as many times as possible to ensure that a prospective pupil is supported in transitioning to our school successfully. Meetings and tours for children with SEND can be requested with the SENDCO team via the School Office or email [senco@chilham.kent.sch.uk](mailto:senco@chilham.kent.sch.uk)

## 13. How does the school support pupils with disabilities?



You are disabled under the Equality Act 2010 if you have a physical or mental impairment that has a 'substantial' and 'long-term' negative effect on your ability to do normal daily activities.

We support all pupils with disabilities. All school staff are trained in supporting neurodiversity. Chilham, St. Mary's Primary School is committed to making its website accessible to visitors with disabilities and is continually working to increase its accessibility and usability. Our Accessibility Plan and Equalities Statement can be found on our website using the following link: [Accessibility Plan & Equalities Statement](#)

## 14. How will the school support my child's mental health and emotional and social development?

We provide support for pupils to progress in their emotional and social development in the following ways:

- All pupils, whether they have SEND or not, are encouraged to be part of the school council.
- Pupils with SEND are also encouraged to be part of extra-curricular activities to promote teamwork/building friendships

# Kent SEND Information Report

- We provide extra pastoral support for listening to the views of pupils with SEND via all of our key members of staff.
- We run a lunch Nurture club for pupils who need extra support with social or emotional development.
- We have a 'zero tolerance' approach to bullying and have a strong culture and ethos of safeguarding.

## 15. What support is in place for looked-after and previously looked-after children with SEND?



Our SENCO will work with all our staff to make sure that all teachers understand how a looked-after or previously looked-after pupil's circumstances and their SEND might interact, and what the implications are for teaching and learning.

Pupils who are looked-after or previously looked-after will be supported much in the same way as any other child who has SEND. However, looked-after pupils will also have a personal education plan (PEP). We will make sure that the PEP and any SEND support plans or EHC plans are consistent and complement one another.

## 16. What support will be available for my child as they transition between classes or settings or in preparing for adulthood?

At Chilham, St. Mary's Primary School, we know that a well-planned transition is key to your child's success in whatever they do next – moving up a year group, moving from one school to another or transferring to secondary school in Year 6

### Between years

To help pupils with SEND be prepared for a new school year we:



- Schedule lessons with the incoming teacher towards the end of the summer term
- Invite the receiving teacher to the Provision Plan final review of the year.
- Familiarise pupils with new classroom and use visual timetables. Share timetable/support information, where possible, before the summer holiday.

# Kent SEND Information Report

## Between schools

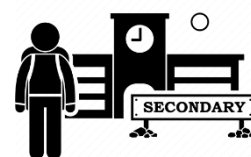
When your child is moving on from our school, we will ask you and your child what information you want us to share with the new setting.

## Between phases (for primary schools)

The SENDCO of the secondary school will either come into our school for a meeting with our SENDCO or will speak with our SENDCO at the STLS “Meet the SENDCO” event held in Term 5. They will discuss the needs of all the pupils who are receiving SEND support.

Pupils will be prepared for the transition by:

- Practising with a secondary school timetable
- Learning how to get organised independently
- Plugging any gaps in knowledge
- Talking about transport to/from school and how to navigate this.
- Possibly spending some extra time at the secondary school accessing extra-transition support offered.



## 17. What support is available for me and my family?

If you have questions about SEND, or are struggling to cope, please get in touch to let us know. We want to support you, your child and your family.

To see what support is available to you locally, have a look at Kent County Council’s local offer. KCC publishes information about the local offer on their website: [KCC Local Offer Information](#)

Our local special educational needs and disabilities information advice and support services (SENDIASS) organization is:

[iASK](#)

Local charities that offer information and support to families of pupils with SEND are:

[Lighthouse on the Marsh](#)

[Includes Us 2](#)

National charities that offer information and support to families of pupils with SEND are:

➤ [IPSEA](#)

# Kent SEND Information Report

➤ [SEND family support](#)

➤ [NSPCC](#)

➤ [Family Action](#)

➤ [Special Needs Jungle](#)

## 18. What should I do if I have a complaint about my child's SEND support?

### [Complaints Policy](#)

Complaints about SEND provision in our school should be made to the class Teacher/Headteacher SENDCO in the first instance. They will then be referred to the school's complaints policy.

If you are not satisfied with the school's response, you can escalate the complaint. In some circumstances, this right also applies to the pupil themselves.

To see a full explanation of suitable avenues for complaint, see pages 246 and 247 of the [SEND Code of Practice](#).

If you feel that our school discriminated against your child because of their SEND, you have the right to make a discrimination claim to the first-tier SEND tribunal. To find out how to make such a claim, you should visit: <https://www.gov.uk/complain-about-school/disability-discrimination>

You can make a claim about alleged discrimination regarding:

➤ Admission

➤ Exclusion

➤ Provision of education and associated services

➤ Making reasonable adjustments, including the provision of auxiliary aids and services

Before going to a SEND tribunal, you can go through processes called disagreement resolution or mediation, where you try to resolve your disagreement before it reaches the tribunal. You can access contact details for the KCC mediation/resolution service at the link below.

[Mediation and Resolution Support](#)

# Kent SEND Information Report

## 19. Supporting documents

- *Equality Information and Objectives Policy*
- *Child protection and safeguarding policy*
- *Behaviour Policy*
- *Accessibility Plan*
- *Attendance and punctuality policy*
- *SEND policy*
  
- *SEN & Disabilities Code Of Practice 2015*
- *Mainstream Core Standards*



## 20. Glossary

- **Access arrangements** – special arrangements to allow pupils with SEND to access assessments or exams
- **Annual review** – an annual meeting to review the provision in a pupil's EHC plan
- **Area of need** – the 4 areas of need describe different types of needs a pupil with SEND can have. The 4 areas are communication and interaction; cognition and learning; physical and/or sensory; and social, emotional and mental health needs.
- **CAMHS** – child and adolescent mental health services
- **Differentiation** – when teachers adapt how they teach in response to a pupil's needs
- **EHC needs assessment** – the needs assessment is the first step on the way to securing an EHC plan. The local authority will do an assessment to decide whether a child needs an EHC plan.
- **EHC plan** – an education, health and care plan is a legally-binding document that sets out a child's needs and the provision that will be put in place to meet their needs.
- **First-tier tribunal/SEND tribunal** – a court where you can appeal against the local authority's decisions about EHC needs assessments or plans and against discrimination by a school or local authority due to SEND
- **Graduated approach** – an approach to providing SEND support in which the school provides support in successive cycles of assessing the pupil's needs, planning the provision, implementing the plan, and reviewing the impact of the action on the pupil
- **Intervention** – a short-term, targeted approach to teaching a pupil with a specific outcome in mind
- **Local offer** – information provided by the local authority which explains what services and support are on offer for pupils with SEND in the local area
- **Outcome** – target for improvement for pupils with SEND. These targets don't necessarily have to be related to academic attainment

# Kent SEND Information Report

- **Reasonable adjustments** – changes that the school must make to remove or reduce any disadvantages caused by a child's disability
- **SENCO** – the special educational needs co-ordinator
- **SEN** – special educational needs
- **SEND** – special educational needs and disabilities
- **SEND Code of Practice** – the statutory guidance that schools must follow to support pupils with SEND
- **SEND information report** – a report that schools must publish on their website, that explains how the school supports pupils with SEND
- **SEND support** – special educational provision which meets the needs of pupils with SEND
- **Transition** – when a pupil moves between years, phases, schools or institutions or life stages